

USA ★ EST. 1969

MEDALLION™

CABINETRY

HANDCRAFTED FOR YOU.

BUILT FOR LIFE

PLANNING GUIDE

MENARDS



Project Checklist

Before you begin your kitchen or bathroom project, use the checklist on the following pages to record the features you like and dislike in your current space. Then think about what you'd like to keep or change in your new space. When it's time to sit down with your Menards Team Member, they will have the information they need to start planning a room that's perfect for you.

STEP 1 Basic Project Information	4
STEP 2 Sketch Your Structural Parameters	6
STEP 3 Cabinet Options	8

Medallion features two high-quality American made cabinetry lines, designed to meet the needs of any customer:

PREMIUM

Dedicated to finding the exact right style and finish you are looking for, Premium cabinets offer our widest array of styles, finishes, and available options for customization.

DELUXE

An expertly selected collection set to match every style, we offer Deluxe in our most popular wood species, styles, and finishes, with select options for customization.



STEP 1

Basic Project Information

How soon are you planning your project? _____

Do you have a Contractor/Remodeler? ☐ Yes ☐ No

What is your project budget? _____

What is the main reason for making the change(s)? ☐ New Construction ☐ Remodel

Which rooms need cabinetry? ☐ Kitchen ☐ #____ Bath(s) ☐ Library/Office

☐ Laundry ☐ Entertainment area ☐ Other _____

When will cabinets be needed?

Approximate start date _____ Completion date _____

Are you willing to change the location of doors and/or windows if necessary? ☐ Yes ☐ No

If yes, explain: _____

What new appliances are you considering and what appliances will be re-used?

What small appliances will you need space for?

☐ Coffee maker ☐ Food processor ☐ Mixer

☐ Toaster ☐ Blender ☐ Wok

☐ Other _____

What do you like about your present kitchen/bath? _____

What do you dislike about your present kitchen/bath? _____

How many family members are in your household?

_____ Adults _____ Teens _____ Children _____ Pets

What is your décor/color preference? _____

What is your wood preference? _____

Do you have any ideas, or have you collected any pictures or sketches that you would like to incorporate into your design? ☐ Yes ☐ No

If yes, please provide them.

Is there anyone in the household with special needs? ☐ Yes ☐ No

In what areas should special requirements be incorporated? _____

Information about your existing kitchen

Interior walls are:

☐ Drywall ☐ Plaster ☐ Block ☐ Brick

Exterior walls are:

☐ Wood ☐ Vinyl ☐ Stucco ☐ Brick/stone/block

Kitchen subfloor is:

☐ Wood ☐ Concrete ☐ Other

Finished floor will be:

☐ Ceramic tile ☐ Wood ☐ Laminate ☐ Vinyl

Floor to ceiling height: ____ ft. ____ in.

Floor to soffit height: ____ ft. ____ in.

Soffit depth: ____ ft. ____ in.

A soffit is the finished bulkhead between the top of the cabinets and the ceiling in some homes.

Window dimensions:

____ x ____ ____ x ____ ____ x ____

Measure from outside edge of trim.

Door dimensions:

____ x ____ Hinge: ☐ Left ☐ Right

Swing: ☐ In ☐ Out

____ x ____ Hinge: ☐ Left ☐ Right

Swing: ☐ In ☐ Out

Measure from outside edge of trim.

Plumbing: ☐ OK as is

Needs to be: ☐ changed ☐ moved ☐ updated

Electrical: ☐ OK as is

Needs to be: ☐ changed ☐ moved ☐ updated

Appliance and Fixture Inventory

	MODEL (optional)	SIZE (W x H x D)	HINGE POSITION (L/R, FACING APPLIANCE)
Range			
Refrigerator			
Sink			
Dishwasher			
Exhaust hood			
Microwave			
Cooktop			
Wall oven			
Second sink			
Compactor			
Other			

STEP 2

Sketch Your Structural Parameters

Sketching a floor plan to scale will aid the design process and really help you visualize the layout. Creating one can be as simple as taking accurate measurements with a tape measure, then using a pencil and graph paper to scale down your results.

Making a Rough Sketch

Start by measuring your existing kitchen space. Measure the sink window wall first. Start in the corner and measure (in inches) to the edge of the window trim. Measure the wall at floor, at center of wall and at ceiling for accuracy. Mark space in grid.

Locate centerline of sink and measure to the nearest corner. Show on grid.

Next, measure all windows and doors. Mark width from outside of trim to outside of trim. Mark which way each door swings, extending a line from the hinge side.

Continue working clockwise, recording all measurements of the room, marking locations and dimensions of doors, windows, archways, ducts to outside and other breaks. Indicate which are exterior walls. Then mark locations of electrical outlets, light switches and light fixtures in the cabinetry installation area. Jot down the overall length of walls, height of the room and distance of every item from the floor, like outlets, switches, ledges and soffits.

Next, study the cabinets in this book and select your dream styles, noting dimensions. Sketch cabinetry in your plan, as appropriate.

You will need 40" below windows and electrical wall outlets to fit new base cabinets, countertop and a 4" backsplash.

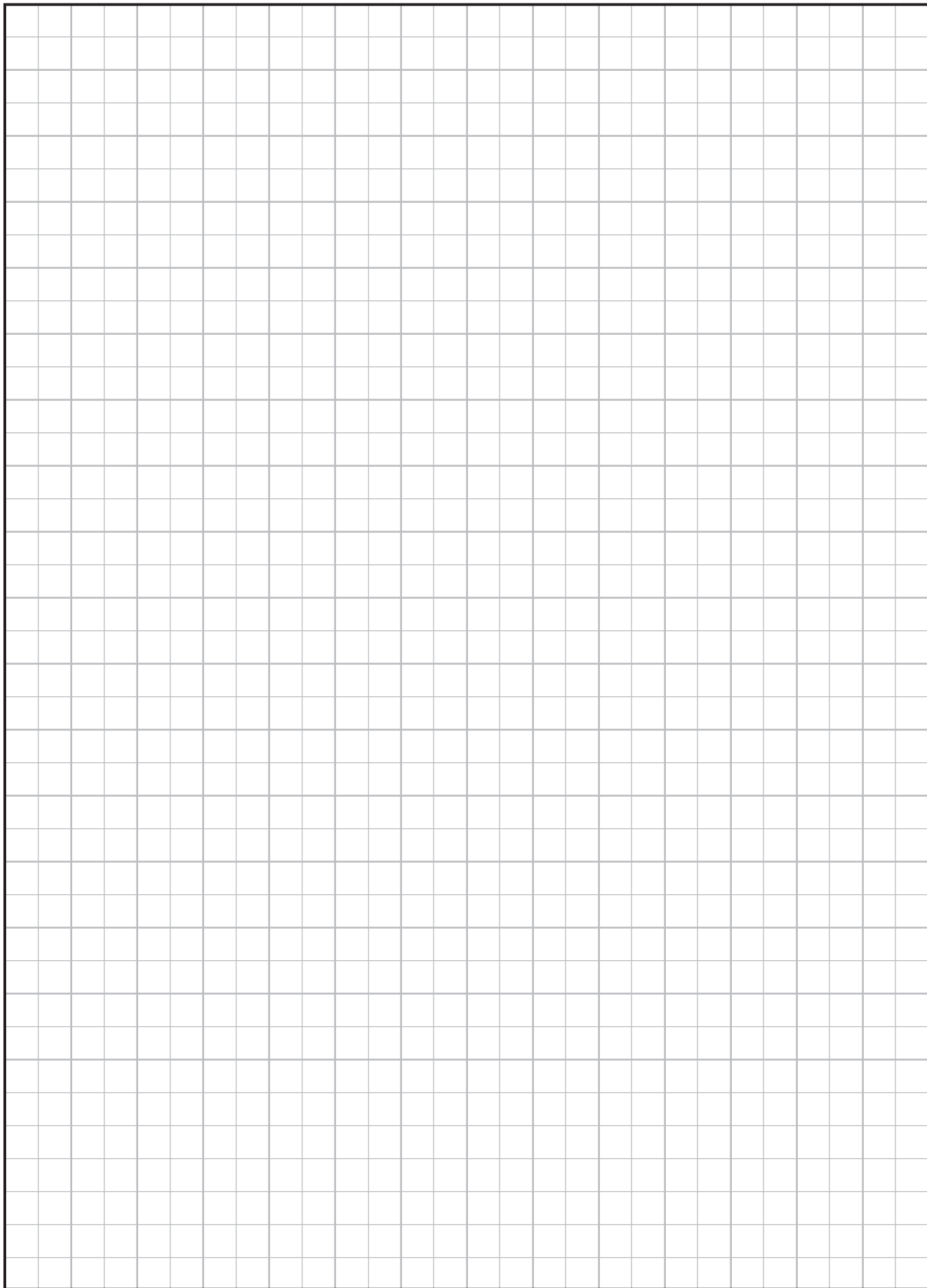
A soffit is the bulkhead between the ceiling and the top of the cabinets in some homes. Distance from floor to soffit should be at least 84". Allow $\frac{1}{4}$ " more if you install an 84" tall cabinet. Depth may vary. Normal depth is 13" (1" deeper than a wall cabinet).

If you do not have soffits, a 42" wall cabinet may be used, or leave the space above the wall cabinet open. Continue adding your desired cabinets, appliances and work station dimensions as appropriate. Your Menards Team Member can check your final plans for accuracy before ordering.

A good rule for the counter space is 12" to 15" of landing area around the range, refrigerator and microwave, with 24" to 36" on either side of the sink. An island in the center of the kitchen can offer uninterrupted space that all work areas can share.

1' 2' 3' 4' 5' 6' 7' 8' 9' 10' 11' 12' 13' 14'

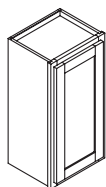
1'
2'
3'
4'
5'
6'
7'
8'
9'
10'
11'
12'
13'
14'
15'
16'
17'
18'
19'



Wall Cabinets

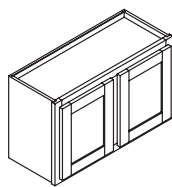
This brochure includes a sampling of our cabinetry. Size ranges listed are a general reference to availability and may be more limited in Deluxe. Consult your Menards Team Member for additional cabinetry options and final size availability.

Wall 12" and 24" Deep



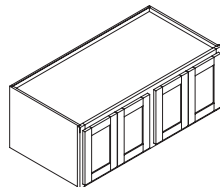
W
9-24" w; 12-42" h

P/D



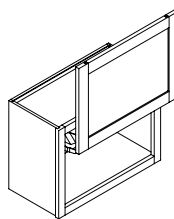
W, W_B
24-48" w; 12-42" h

P/D



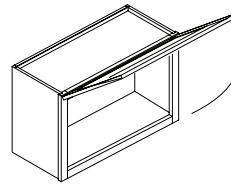
W_F
48" w; 12-42" h

P/D



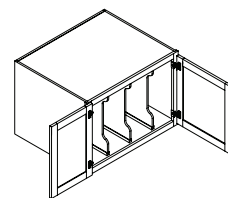
WVL
18-36" w; 18, 21" h

P



WLS
18-36" w; 18, 21" h

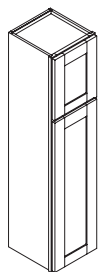
P



TDW_B
24-36" w; 12-27" h,
24" d only

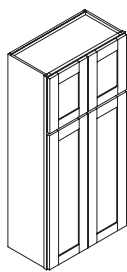
P

Stacked Wall Cabinet 12" Deep



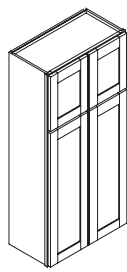
WST
12-24" w; 48-60" h

P



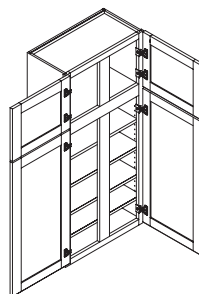
WST_B
24-36" w; 48-60" h

P

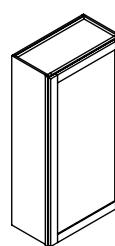


WST
30-36" w; 48-60" h

P

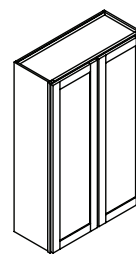


Counter Wall, Full-Height Door



CW
12-24" w
48-60" h; 12" d

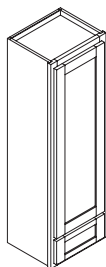
P/D



CW, CW_B
24-36" w
48-60" h; 12" d

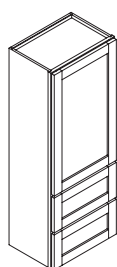
P/D

Counter Wall with Drawers 12" Deep



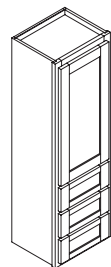
WDC
15-24" w; 48-60" h

P/D



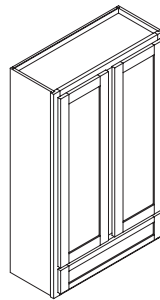
W2D
15-24" w; 48-60" h

P



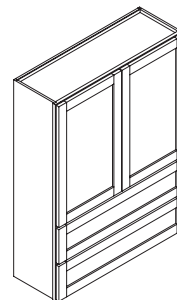
WDG
15-24" w; 48-60" h

P



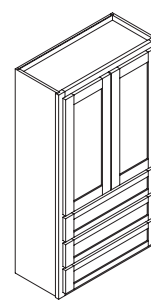
WDC, WDC_B
24-36" w; 48-60" h

P/D



W2D, W2D_B
24-36" w; 48-60" h

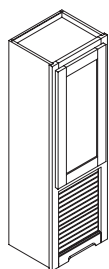
P



WDG, WDG_B
24-36" w; 48-60" h

P

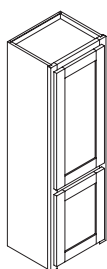
Counter Wall with Appliance Garage 12" Deep



WAG

15-24" w; 48-60" h

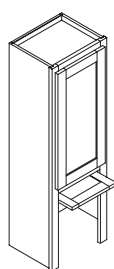
P



WDAG

15-24" w; 48-60" h

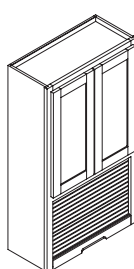
P



WTDAG

15-24" w; 48-60" h

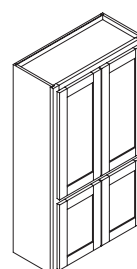
P



WAG_B

24-36" w; 48-60" h

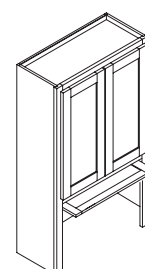
P



WDAG_B

24-36" w; 48-60" h

P



WTDAG_B

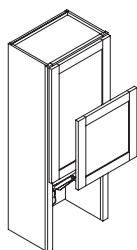
24-27" w; 48-60" h

P

Wall, Pull-Out Storage

Bake Center

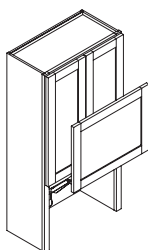
Message Center



WVLDAG

18-24" w; 48-60" h

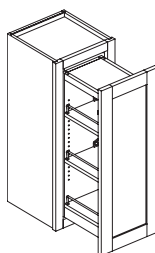
P



WVLDAG_B

24-36" w; 48-60" h

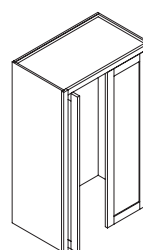
P



WPS

9", 12" w
30" h; 12", 15" d

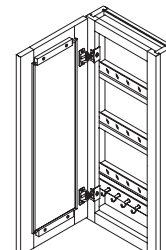
P



BCPD

30-36" w
48-60" h; 15-24" d

P

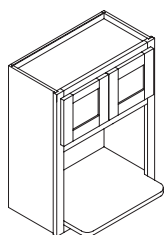


WMC

12" w
30-48" h; 3", 6" d

P/D

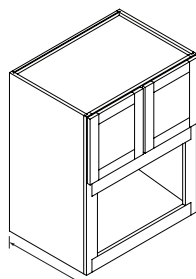
Wall Microwave



PMW_B, PMW

24-30" w
30-42" h; 12" d

P/D

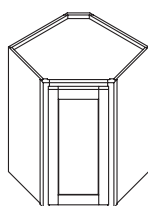


BMW_B, BMW

24-36" w
30-42" h; 18", 21" d

P/D

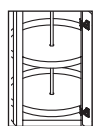
Diagonal Corner Wall



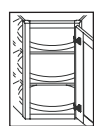
DW, LSDW, LSDWW

21-27" w; 24-42" h

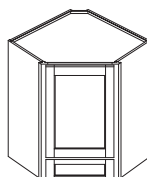
P/D (LSDWW not in Deluxe)



LSDW



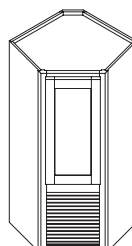
LSDWW



DWD

24", 27" w; 30-60" h

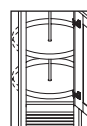
P



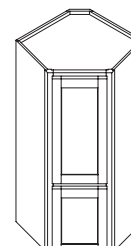
DWAG, LDWAG

24", 27" w; 48-60" h

P



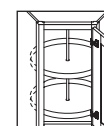
LDWAG



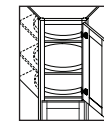
DWAG, LDWAG, LDWDAGW

24", 27" w; 48-60" h

P

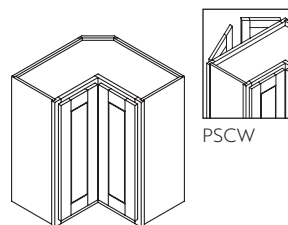


LDWDAG



LDWDAGW

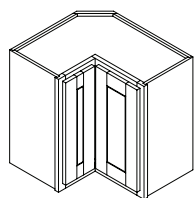
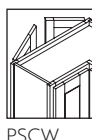
Easy Reach Square Corner Wall 12" Deep



SCW, PSCW

24", 27" w (SCW); 24" w (PSCW)
24-42" h

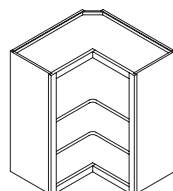
P/D (PSCW not in Deluxe)



ACW

21", 24" w; 24-42" h

P

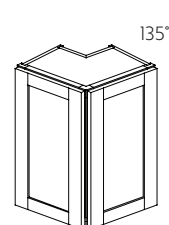


WODSCW

24" w; 30-42" h

P

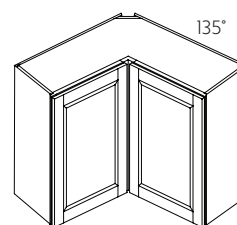
Angled Wall



W_COA

6-12" w; 30-42" h

P

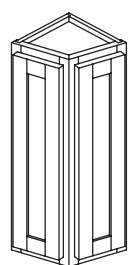


W_CIA

21-27" w; 30-42" h

P

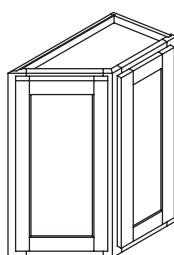
Angled Wall



WAC

12" w; 30-42" h

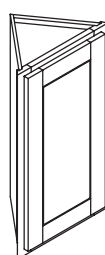
P



WAC

24" w; 30-42" h

P/D

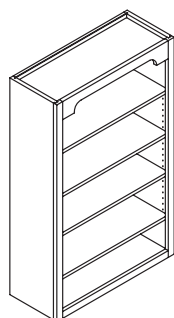


DWC

12-24" w; 30-42" h
18-24" widths include butt doors.

P/D

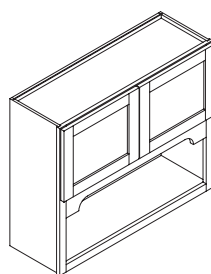
Decorative Display Wall



BK*

18-48" w; 12-66" h

P/D

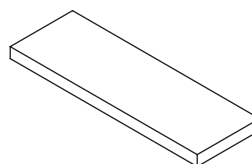


WLD_B*

24-36" w; 30-42" h

P

Floating Shelves



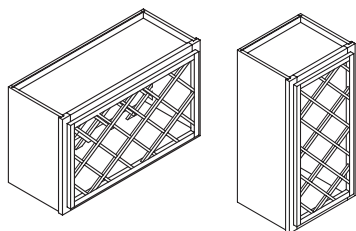
FLT*

24-72" w; 12" d

P/D

* Various valance options available. Consult your Menards Team Member for details.

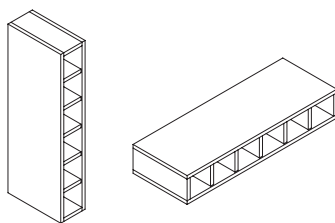
Wine and Spice Wall 12" Deep



WR

Horizontal Width: 24–36"
Height: 15–24"
Vertical Width: 15–24"
Height: 30–42"

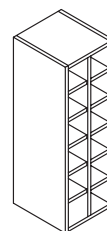
P/D



WWC

6" w; 12–42" h
Use vertically or horizontally.

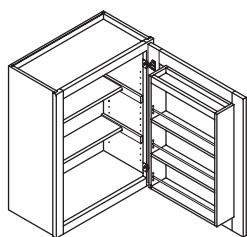
P



WWCD

12" w; 12–42" h
Use vertically or horizontally.

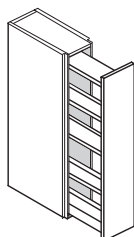
P



WDSR

15–24" w; 30–42" h

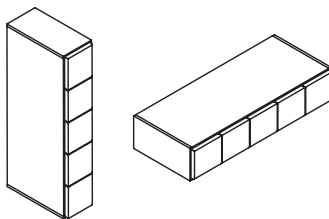
P/D



WSRC

3", 6" w; 30–42" h

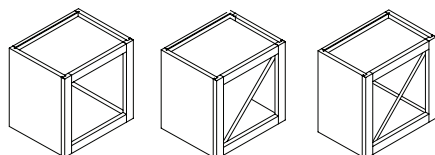
P/D



SDC

6" w x 12" d; 12–42" h
Use vertically or horizontally.

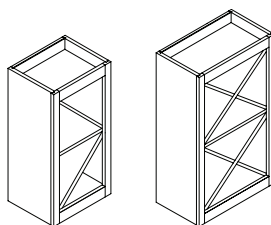
P



WCWS

12–24" w; 12–24" h
12–15" width and heights receive 2 openings.

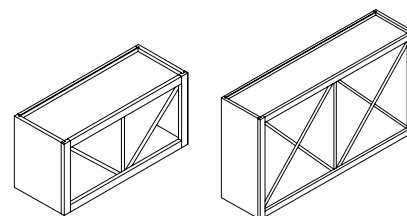
P



WCWS - Vertical

12–24" w; 24–48" h
12–15" widths receive 4 openings.

P

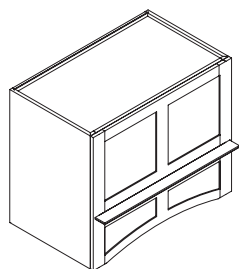


WCWS - Horizontal

24–48" w; 12–24" h
24–30" widths receive 4 openings.

P/D

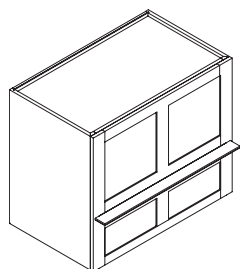
One Piece Wood Hoods



RHDXA

24", 30", 36", 42" h;
21¾", 24¾" d;
30", 36", 42", 48", 54" w

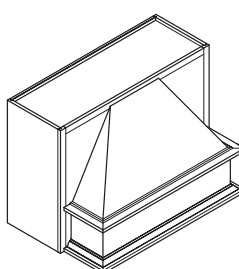
P



RHDXB

24", 30", 36", 42" h;
21¾", 24¾" d;
30", 36", 42", 48", 54" w

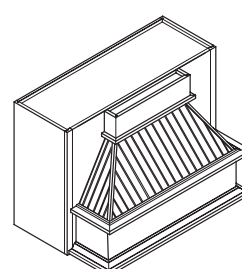
P/D



ORHPMPT*

30" h;
21", 24" d
36", 42", 48", 54" w

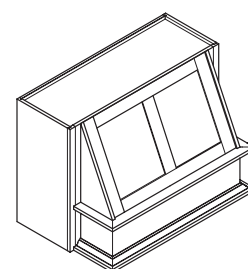
P



ORHPMWCT*

30" h;
21", 24" d
36", 42", 48", 54" w

P



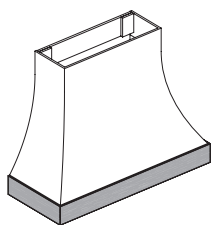
ORHPMDXT*

30" h;
21", 24" d
36", 42", 48", 54" w

P

* SKU also available with one piece onlay modification. See your Menards Team Member for onlay options.

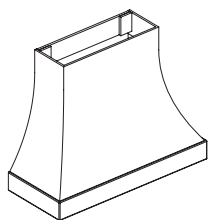
Wood Hoods (Available in Premium)



CURVHOOD

30", 42", 48" h
22¾" d
36", 42", 48", 54" w

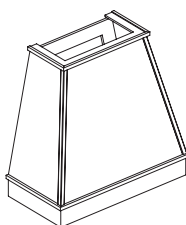
P



CURVHOODSS

30", 42", 48" h
22¾" d
36", 42", 48", 54" w

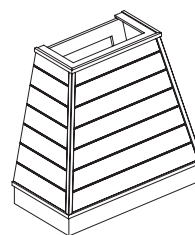
P



TAPHOOD

24", 30", 36", 42" h
21", 24" d
30", 36", 42", 48" w

P



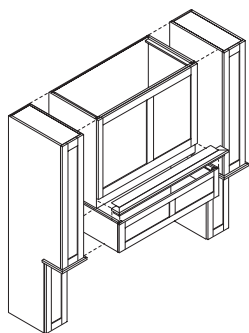
TAPHOODSL

24", 30", 36", 42" h
21", 24" d
30", 36", 42", 48" w

P

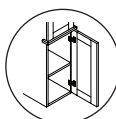
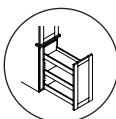
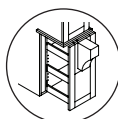
Alcove Hood Program (Available in Premium)

An Alcove Hood is made up of five components and includes a SKU for the column, soffit, mantel, ledge and Vent-A-Hood® Liner/Blower (optional). See your Menards Team Member for details and complete options.



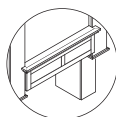
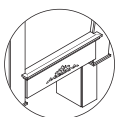
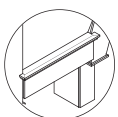
CLM Columns

9", 12" w
22½", 25½" d
60", 72", 84" h



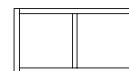
MNTL*, MNTLDX Mantels

36-84" w
24", 27" d
10¾" h



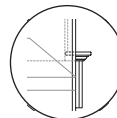
AHSDX Soffit

36-84" w
21", 24" d
30-50" h



LEDGE Ledge

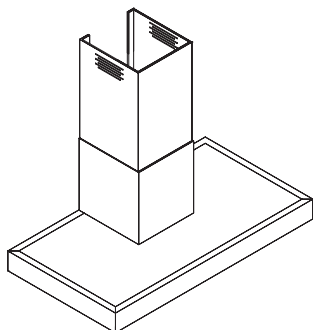
36-84" w
Height: included
in soffit height



* SKU also available with one piece onlay modification. See your Menards Team Member for onlay options.

Stainless Steel Range Hoods (Available in Premium)

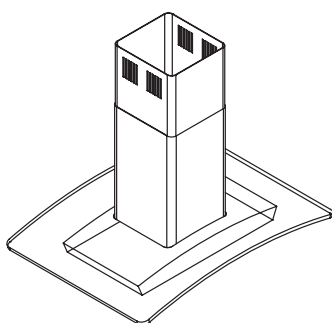
Brushed stainless steel construction with Halogen lights. Heat Sentry™ system automatically turns blower to high speed when excess cooking heat is detected. Standard flues fit 8-9 foot ceilings. See your Menards Team Member for details and dimensions.



SSHVS36

Wall Mount

P



SSHPCG36

Ceiling Mount

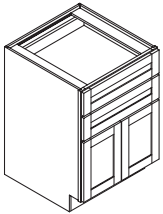
P



Base Cabinets

This brochure includes a sampling of our cabinetry. Size ranges listed are a general reference to availability and may be more limited in Deluxe. Consult your Menards Team Member for additional cabinetry options and final size availability.

Base with Doors and Drawers 24" Deep

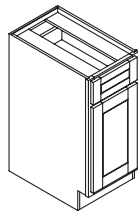


B2D, B2D_B

12–36" w

Available with one door in 12–24" widths.

P/D

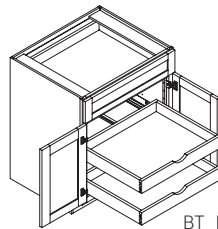


B, BT

9–24" w

Available with one (BT_1) or two (BT_2) roll-out trays.

P/D



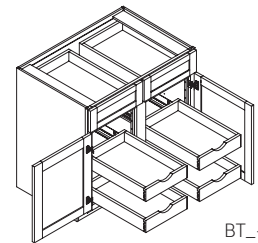
BT_B-2

B_B, BT_B

24–36" w

Available with one (BT_B-1) or two (BT_B-2) roll-out trays.

P/D



BT_-4

B, BT

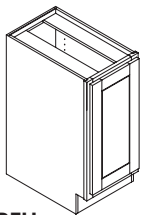
30–48" w

Available with two (BT_-2) or four (BT_-4) roll-out trays.

P/D

Base with Full-Height Doors 34½", 40½" High*; 12"**, 24" Deep

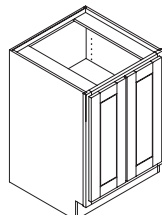
* Size not available in Deluxe. ** 12" depth available in Deluxe by modification only.



BFH

9–24" w

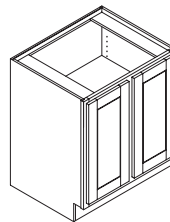
P/D



BFH_B

24–36" w

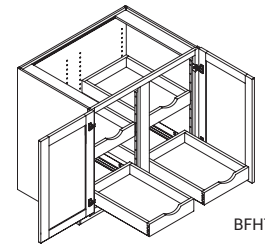
P/D



BFH

30–48" w

P/D



BFHT

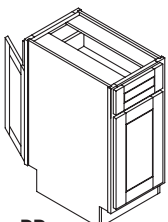
BFHT, BFHT_B

24–48" w; Available with two or four roll-out trays.

P/D

Peninsula Base 24" Deep

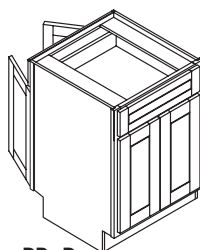
* PCBFH_B cabinet depth is 24 ¾" to allow for ¾" thick panel to be applied to back of adjacent cabinet.



PB

15–24" w

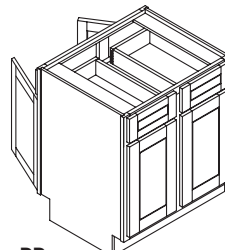
P/D



PB_B

24–36" w

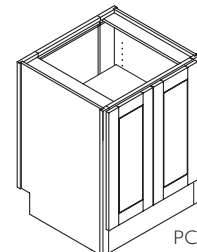
P/D



PB

30–36" w

P/D



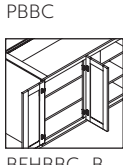
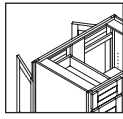
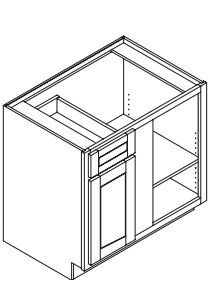
PCBFH_B*

PCB_B, PCBFH_B*

27" w Available with top drawer (PCB_B) or full-height doors (PCBFH_B*).

P/D (PCBFH_B not in Deluxe)

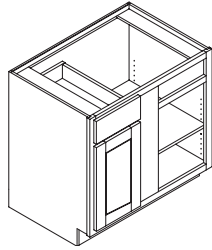
Blind Corner Base 24" Deep



BBC, BBC_B, BFHBBC, BFHBBC_B, PBBC, PBFHBBC

36-48" w

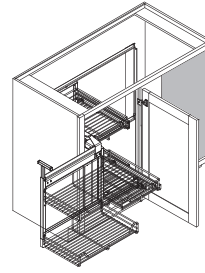
P



BBCU

36-48" w

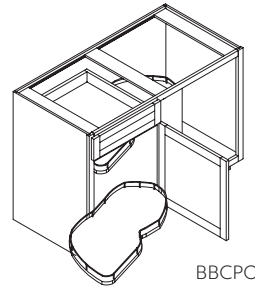
D



BFHBC

48" w

P



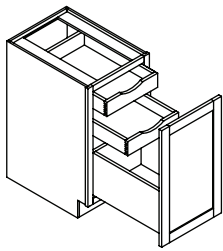
BBCPO

BBCPO, BFHBBCPO

45-48" w

P/D

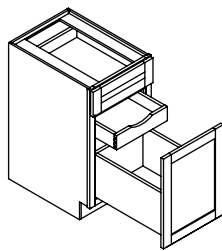
Base with Tiered Storage 24" Deep



BFH_H2SOS

12-24" w

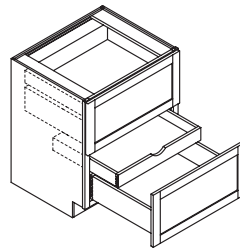
P



B_HSOS

12-24" w

P

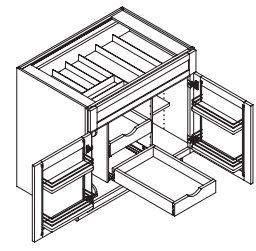


2DBT

12-36" w

P

Smart Storage Base

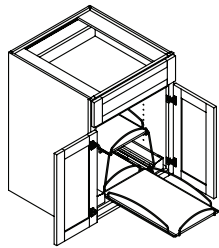


B_BSMART

36" w, 24" d

P/D

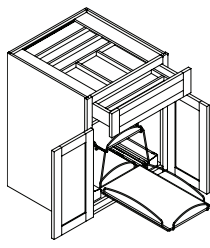
Base with Pots and Pans Storage 24" Deep



B_BPP

24", 30" w

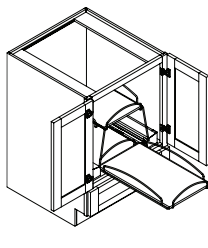
P



B_BTCDPP

24" w

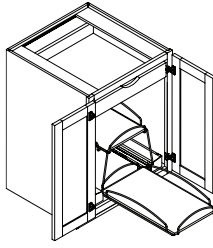
P



SBD_BPP

24", 30" w

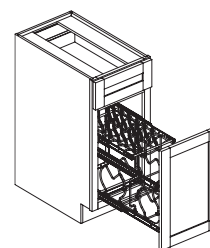
P



BFH_BPP

24", 30" w

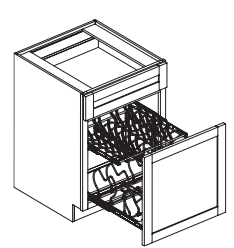
P



B_TPP

15" w

P

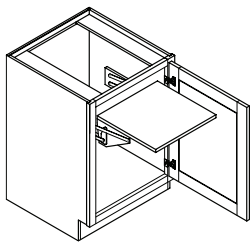


B_TPP

24" w

P

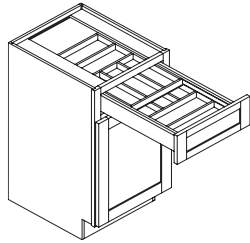
Base with Internal Accessories 24" Deep



BFH_MX

18-24" w

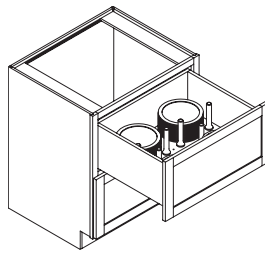
P



B_TCD

15-24" w
24" width available with
one door or butt doors.

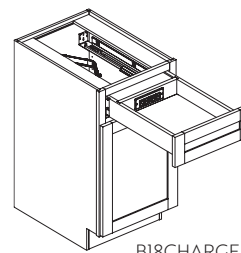
P



2DB_PEG

30-36" w

P

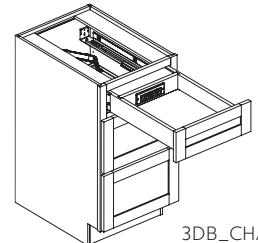


B18CHARGE

B_CHARGE

18", 36" w

P



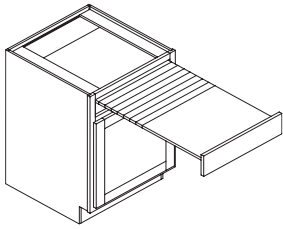
3DB_CHARGE

3DB_CHARGE, 4DB_CHARGE

18" w

P

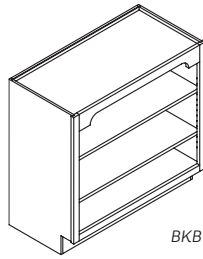
Base with Pull-Out Table and Open Display

**B_POT, B_POTB**

24" w, 24" d

Available with one door or butt doors.

P



BKB

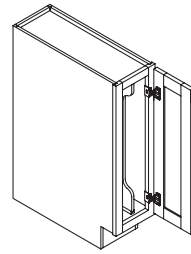
BKB, BOD

18–48" w; 34½", 40½" h

12", 18", 24" d

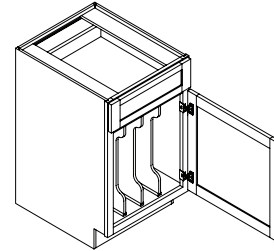
Valance options available.

P/D

**TB**

9" w

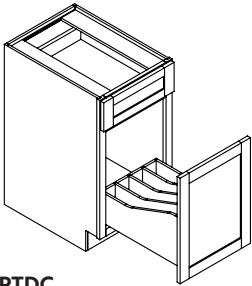
P/D

**TDC**

12–18" w

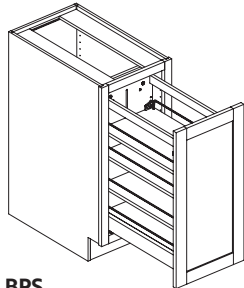
P/D

Base with Tray Dividers and Pull-Out Storage 24" Deep

**PTDC**

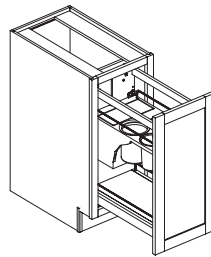
12–18" w

P/D

**BPS**

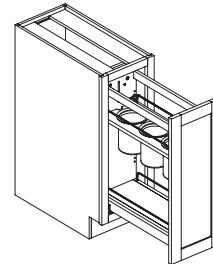
9–15" w

P/D

**BFHKC**

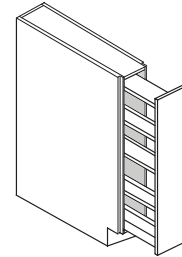
12", 15" w

P/D

**BFHC**

9", 12" w

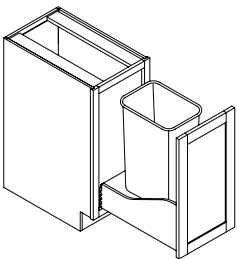
P

**BSCR**

3", 6" w

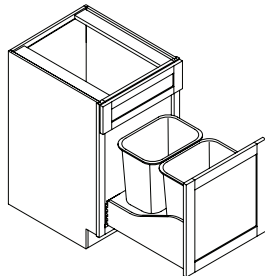
P/D

Base with Waste Containers 24" Deep

**BFH_WB**

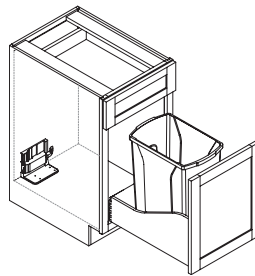
15–21" w

P

**B_WB, B_DWB**

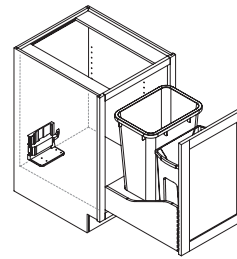
15–21" w

P/D

**B_WBS*, B_DWBS***

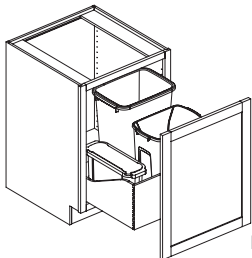
15–21" w

P

**BFH_WBS***

15–21" w

P

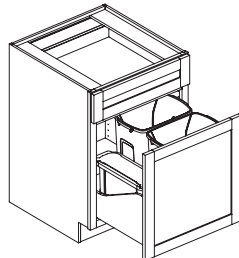


BFH_WBC

BFH_WBC, BFH_WBSC*

24" w

P/D



B_DWBC

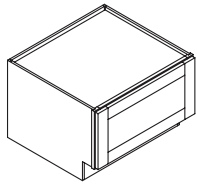
B_DWBC, B_DWBSC*

24" w

P

*Includes automated drive; available in Premium only.

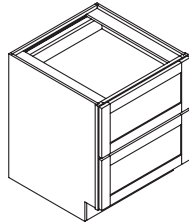
Drawer Base 24" Deep



DB

12–36" w
18¾" h (also in 21" d)

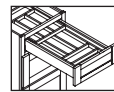
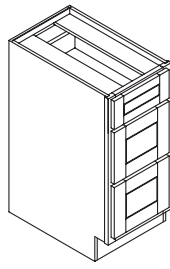
P



2DB

12–36" w
28½", 32", 34½" h

P

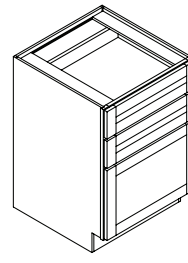


3DB_TCD

3DB, 3DB_BB, 3DB_TCD

12–36" w

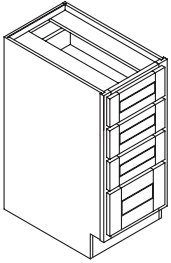
P/D



B3D

12–36" w

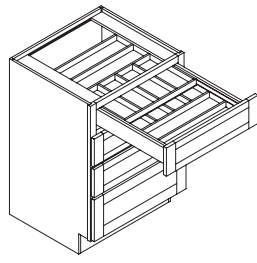
P



4DB

12–36" w

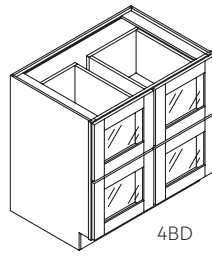
P/D



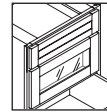
4DB_TCD

15–24" w

P



4BD



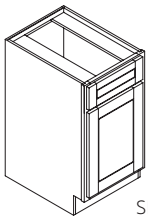
3DB_IG

2BD, 3DB_IG, 4BD

15–36" w

P

Sink Base

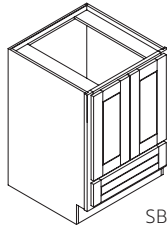


SB

SB, SBD*

18–24" w, 24" d

P/D

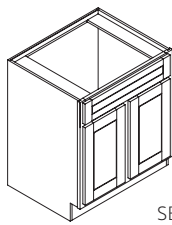


SBD_B

SB_B, SBD_B*

24–36" w, 24" d

P/D

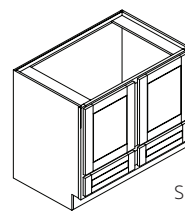


SB

SB, SBD*

30–36" w, 24" d

P/D

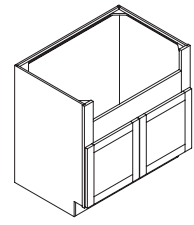


SBD

SB, SBD*

39–48" w, 24" d

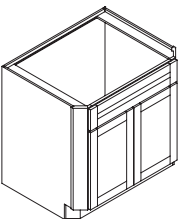
P/D



SBA_B*, SBA

30–42" w, 24" d

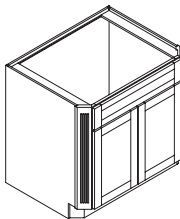
P/D



SB_BCC

30–42" w, 27" d

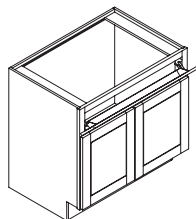
P/D



SB_BFCC

30–42" w, 27" d

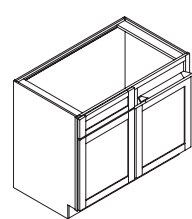
P/D



SB_BTDT

30–36" w, 24" d

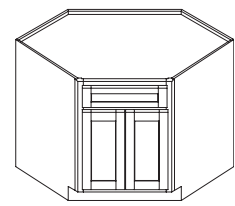
P/D



SB_TDT

39–42" w, 24" d

P/D

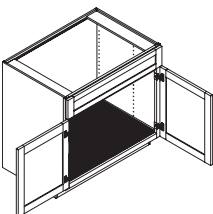


DSB_B

DSB, DSB_B

36", 42" w, 24" d

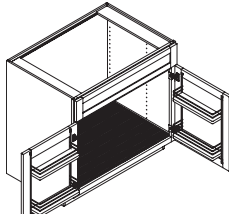
P/D



SB_BSM

30–36" w, 24" d

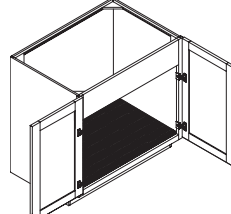
P/D



SB_BSMDORG

30–36" w, 24" d

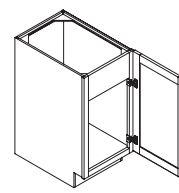
P/D



SBFH_BSM

30–36" w, 24" d

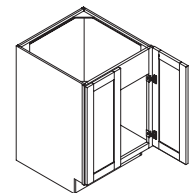
P



SBFH

18–24" w, 24" d

P

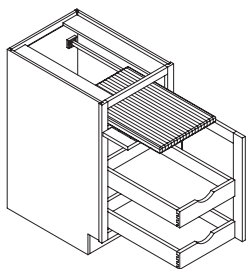


SBFH_B, SBFH

24–45" w, 24" d

P

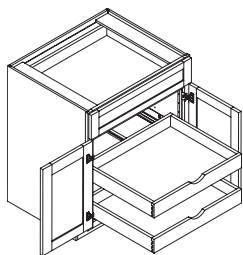
Base Appliance



RBCB, RBCB_B

18–24" w, 24" d
24" width available with one door or butt doors.

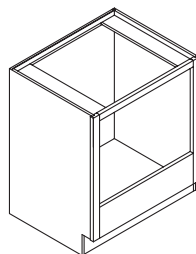
P



RB_B

30–36" w, 24" d

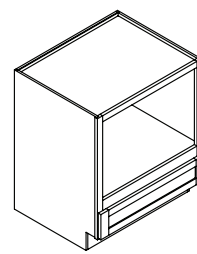
P/D



BOC

24–36" w; 24", 27" d

P/D

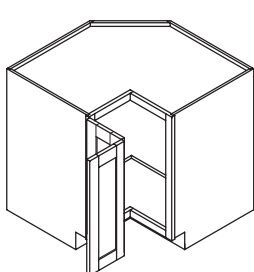


BW_D

24–36" w; 24", 27" d

P/D

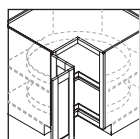
Easy Reach Square Corner Base 24" Deep



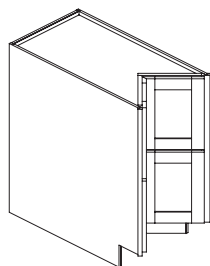
SCB, SSCB

33–36" w

P/D



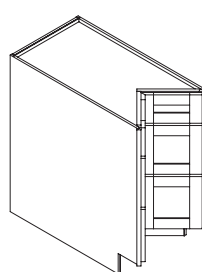
SSCB



2CDB

36–39" w

P

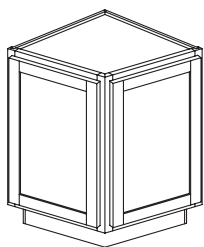


3CDB

36–39" w

P

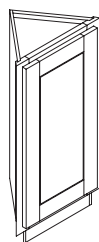
Special Configuration Base 24" Deep



BAC

24" w

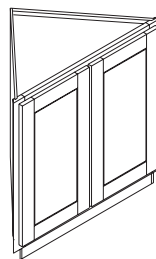
P/D



DBC

12–15" w

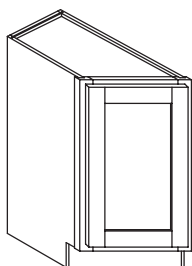
P



DBC_B

18–24" w

P

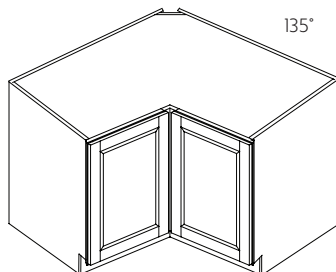


BTA

12" w

Specify angle left or right.

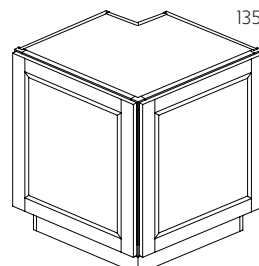
P/D



BFH_CIA

21–27" w

P

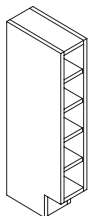


BFH_COA

6–12" w

P

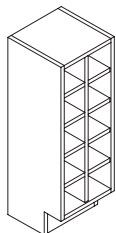
Wine Base



BWC

6" w, 34½" h, 40½" h, 12" d

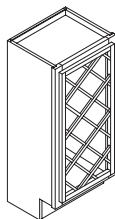
P



BWCD

12" w, 34½" h, 40½" h, 12" d

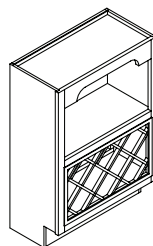
P



BFHWR

15-24" w, 12" d

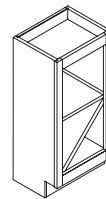
P/D



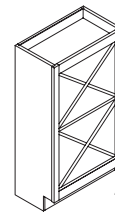
BODWR

18-24" w, 12" d
Valance options available.

P



34½" h



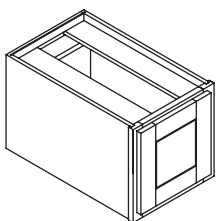
40½" h*

BCWS

15-18" w, 34½" h, 40½" h*, 12" d
15" widths receive 4 openings.

P/D

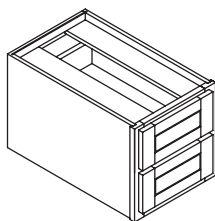
Component Drawer 24" Deep



CD1D

12-48" w; 15" h

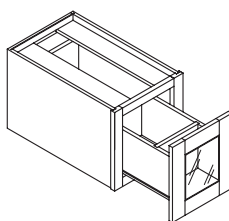
P



CD2D

12-48" w; 15" h

P

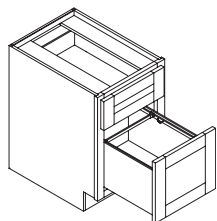


CDBD

15, 18" w; 15" h

P

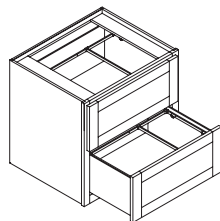
File Drawer



DFDB, File Drawer Base

18-21" w; 28½", 32" h
18, 21, 24" d

P/D



TDFB, File Drawer Base

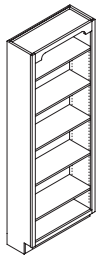
18-30" w; 28½", 32", 34½" h
18, 21, 24" d

P

Tall Cabinets

This brochure includes a sampling of our cabinetry. Size ranges listed are a general reference to availability and may be more limited in Deluxe. Consult your Menards Team Member for additional cabinetry options and final size availability.

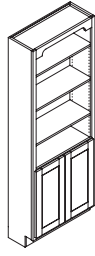
Tall Bookcase 12", 18" Deep



US*

18-48" w; 84-96" h

P/D



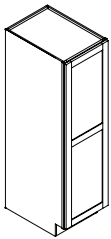
UB_B*, UB*

24-48" w; 84-96" h

P

* Various valance options available. Consult your Menards Team Member for details.

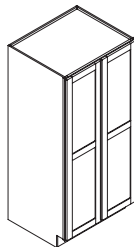
Tall 12", 24" Deep



UFH

12-24" w; 64½" h

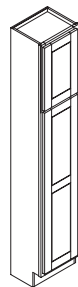
P



UFH_B, UFH

24-36" w; 64½" h

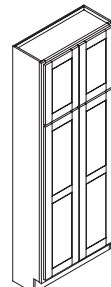
P



UCS

15-24" w; 84-96" h

P/D

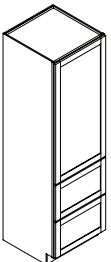


UCS_B

24-36" w; 84-96" h

P/D

Tall with Drawers 24" Deep



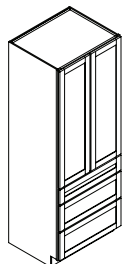
UC2DB

UC2DB, UC2DB_B

15-36" w; 84-96" h

24-36" widths include butt doors.

P



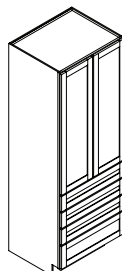
UC3DB_B

UC3DB, UC3DB_B

15-36" w; 84-96" h

Available with one door in 15-24" w.

P



UC4DB_B

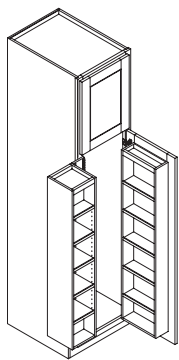
UC4DB, UC4DB_B

15-36" w; 84-96" h

Available with one door in 15-24" w.

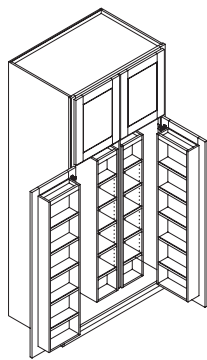
P

Tall with Pantry Storage 24" Deep



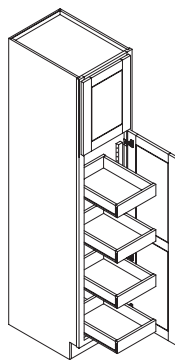
PC
18" w; 84-96" h

P



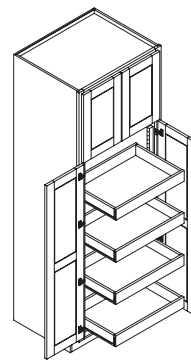
PC_B
36" w; 84-96" h

P



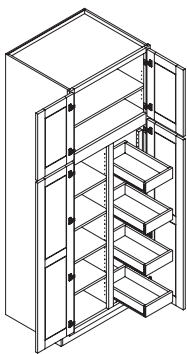
UT_-4
15-24" w; 84-96" h

P/D



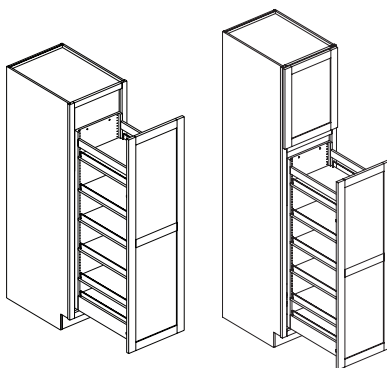
UT_B-4
24-36" w; 84-96" h

P/D



SUT_B-4
30-36" w; 84-96" h

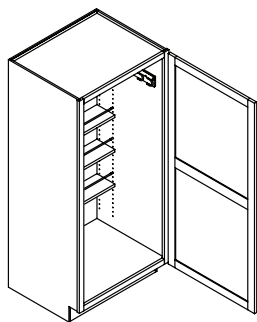
P



UPS
9-18" w; 64½" h, 84-96" h

P

Tall Broom 24" Deep

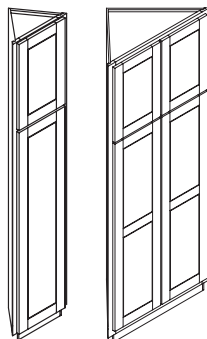


TBC, 64½" h

TBC, TBC_B
24-30" w; 64½", 84-96" h
24" width available with
one door or butt doors.

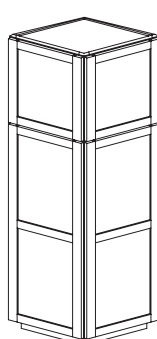
P

Tall Angled 24" Deep



DUC, DUC_B
12-24" w; 84-96" h
18-24" widths include
butt doors.

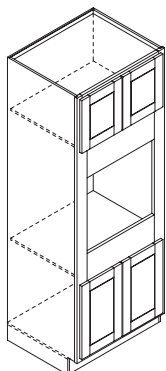
P



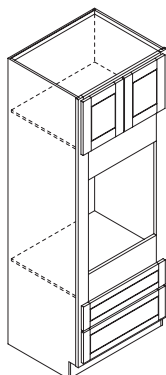
UAC
24" w; 84-96" h

P

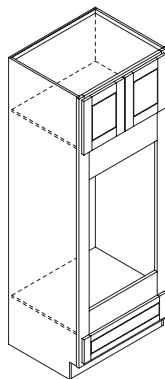
Oven 84", 87"*, 90", 93", 96" High



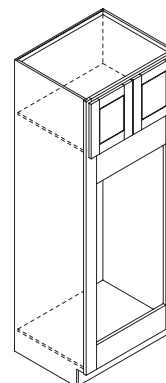
OCA_B
24–36" w
24", 27" d
P



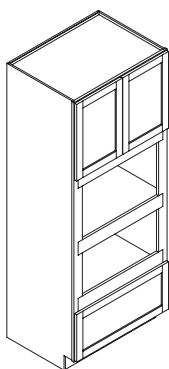
OCB_B
24–36" w
24", 27" d
P/D



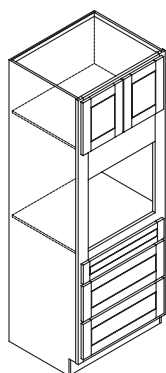
OCC_B
24–36" w
24", 27" d
P/D



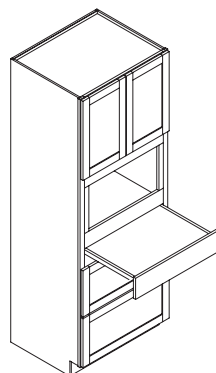
OCD_B
24–36" w
24", 27" d
P/D



OCF_B
24–36" w
24", 27" d
P

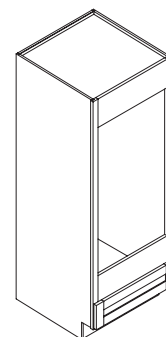


OCG_B
24–36" w
24", 27" d
P



OCK_B
24–36" w
24", 27" d
P

Oven 64½" High



OCH, OCJ
24–36" w
24", 27" d
P

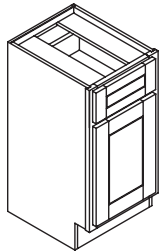
* Size not available in Deluxe.



Vanity Cabinets

This brochure includes a sampling of our cabinetry. Size ranges listed are a general reference to availability and may be more limited in Deluxe. Consult your Menards Team Member for additional cabinetry options and final size availability.

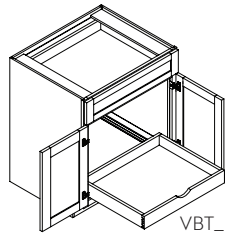
Vanity Base 18", 21" Deep; 32", 34½" High



VB

VB, AHVB, VBT_-1, AHVBT_-1****
12–24" w

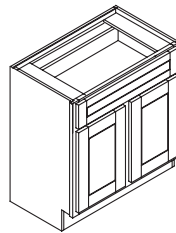
P/D



VBT_B-1

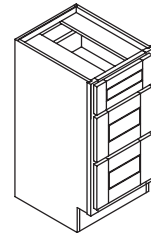
VB_B, AHVB_B, VBT_B-1, AHVBT_B-1****
24–30" w

P/D



VB, AHVB
30" w

P

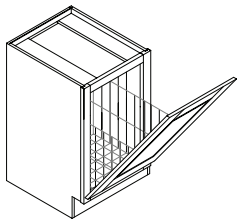


VDB, AHVDB
12–36" w

P/D

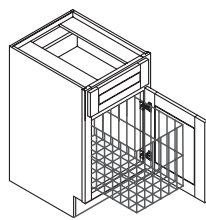
** SKUs available with one roll-out tray; SKUs not available in Deluxe.

Vanity Base with Internal Accessories 32", 34½" High



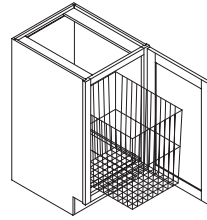
FHV_B_TH, AHFHV_B_TH
21" w; 18" d; 21" d

P/D



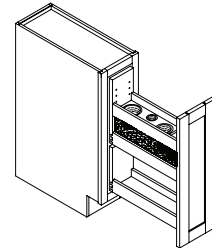
HVB, AHVB
15", 18" w; 21" d

P



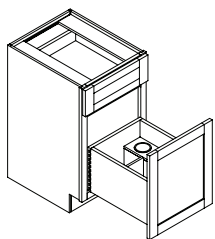
FHV_B, AHFHV_B
15", 18" w; 21" d

P



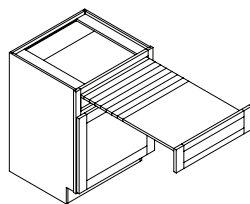
VGR, AHVGR
9", 12" w; 21" d

P



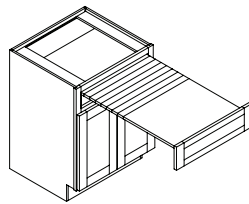
VBSSC, AHVBSSC
15–24" w; 18", 21" d

P



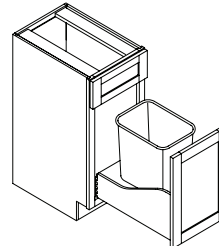
VPOT, AHVPOT
24" w; 21" d

P



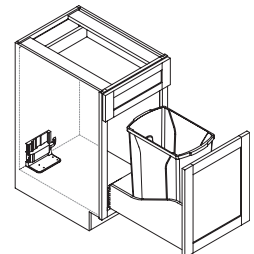
VPOT_B, AHVPOT_B
24" w; 21" d

P



V_WB, AHV_WB
15", 18" w; 21" d

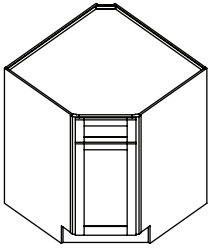
P/D



V_WBS, AHV_WBS
15", 18" w; 21" d
Includes automated drive.

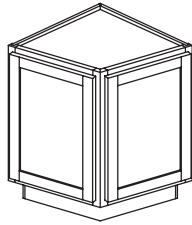
P

Vanity Base, Angled, Diagonal and Mini Base 32", 34½" High



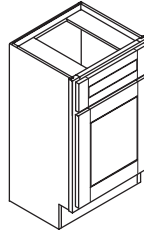
VDCB, AHVDCB
30", 33" w; 18", 21" d

P



VAC, AHVAC
21" w

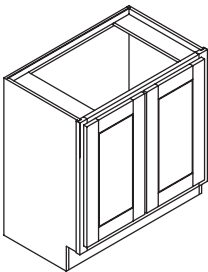
P



16VSB, 16AHVSB
18" w; 16" d

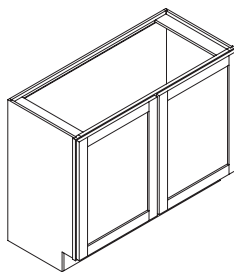
P

Vanity Sink Base 18"*, 21" Deep; 32", 34½" High



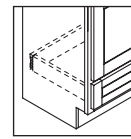
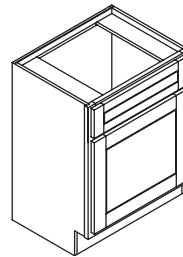
FVSB_B, AHFVSB_B
24–36" w

P



FVSB, AHFVSB
42" w

P

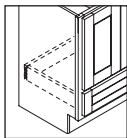
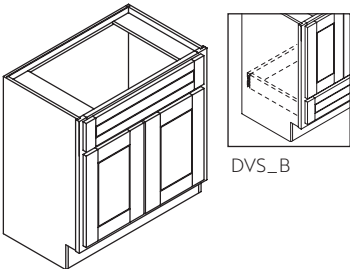


DVS

VSB, DVS, AHVSB, AHDVS
18–24" w

P/D

(DVS, AHDVS not in Deluxe)

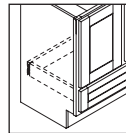
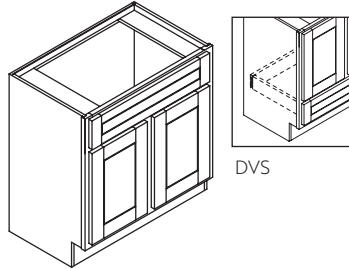


DVS_B

VSB_B, DVS_B, AHVSB_B, AHDVS_B
24–36" w

P/D

(DVS_B, AHDVS_B not in Deluxe)

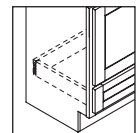
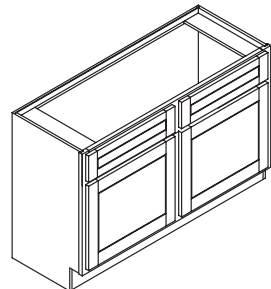


DVS

VSB, DVS, AHVSB, AHDVS
30–36" w

P/D

(DVS, AHDVS not in Deluxe)



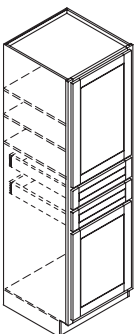
DVS

VSB, DVS, AHVSB, AHDVS
42–48" w

P/D

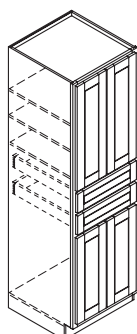
(DVS, AHDVS not in Deluxe)

Vanity Linen 84", 87"*, 90", 93", 96" High



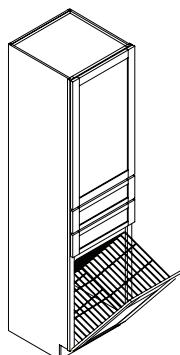
VLCD
18", 24" w; 18", 21" d

P



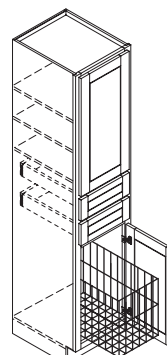
VLCD_B
24" w; 18", 21" d

P



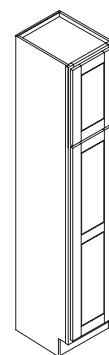
VLCDTH
21" w; 21" d

P



VLCDH
18" w; 21" d

P

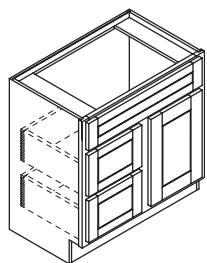


VLC
15", 18" w; 21" d

D

* Size not available in Deluxe.

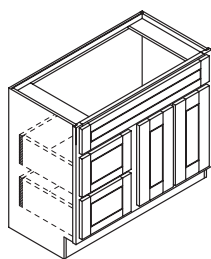
Combination Vanity Sink Base 18"*, 21" Deep; 32", 34½" High



VSDB, AHVSDB****

24–33" w

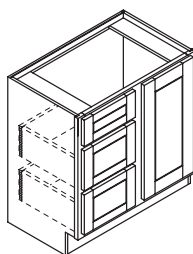
P/D



VSDB_B, AHVSDB_B****

36–42" w

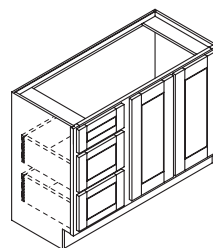
P/D



FVSD, AHFVSD****

24–33" w

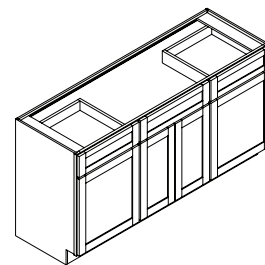
P/D



FVSD_B, AHFVSD_B****

36–42" w

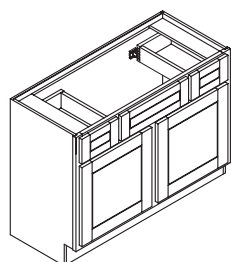
P/D



VS_B, AHVS_B

48–72" w

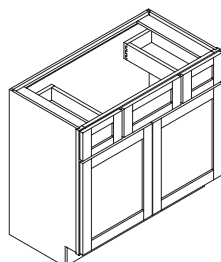
P



CVSB, AHCVSB

36–48" w

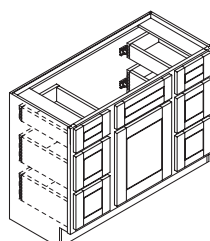
P/D



CVSB_B, AHCVSB_B

36" w

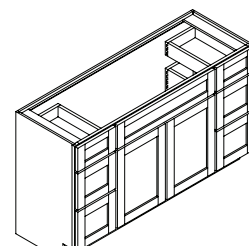
P/D



VSDB, AHVSDB

42", 45" w

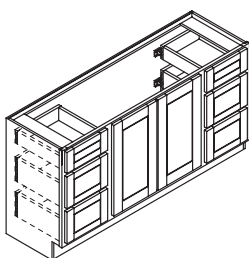
P/D



**VSDB, AHVSDB,
VSDB_B, AHVSDB_B**

48–72" w

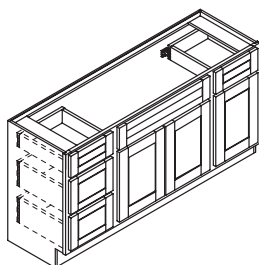
P



**FVSD, AHFVSD,
FVSD_B, AHFVSD_B**

48–72" w

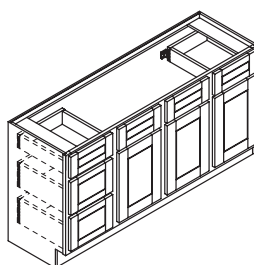
P



CVSB_B, AHCVSB_B****

60–72" w

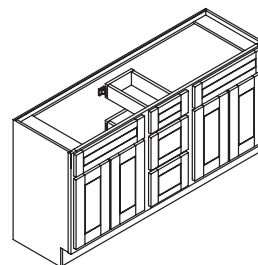
P



CVSB, AHCVSB****

60–72" w

P

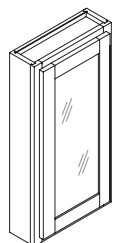


DSVB_B, AHDSVB_B

60–72" w

P/D

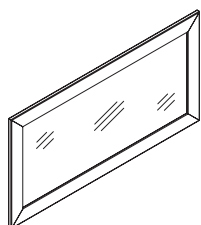
** Specify location of drawer stack (left or right).



VWCM

12–24" w; 4¾" d
24, 30, 36" h

P/D



FM

36" x 48" maximum dimension

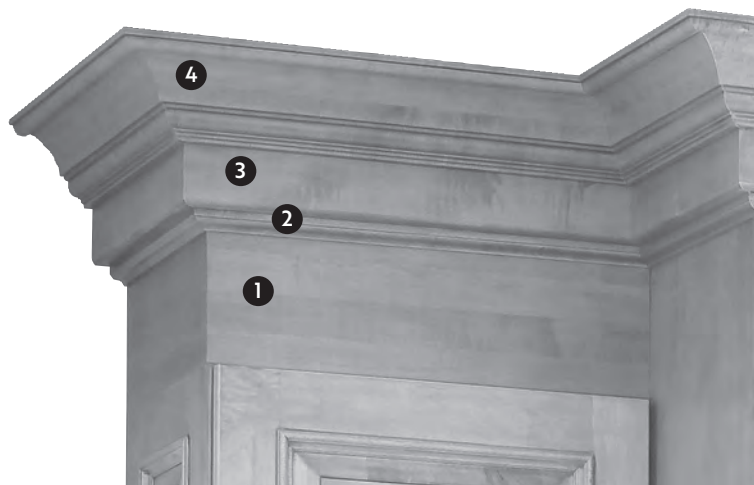
P

Moldings, Accents

Consult your Menards Team Member for a wide range of accent pieces to add style and sophistication to your cabinetry, including moldings, valances, corbels and decorative legs.

Combine moldings to create your unique style

1. Tall Filler (UF)
2. Profiled Solid Stock, Style H (PSSH)
3. Profiled Solid Stock, Style D (PSSD)
4. Deluxe Decorative Crown Molding (DXCRN8)



1. Tall Filler (UF6)
2. Tall Filler (UF3)
3. Profile Stock (PSSH)
4. Marquis Crown Molding (MRQCRN)

Common Sense Planning

Accessories

Factory-installed options save money on installation

Installed accessories are a convenient way to offer additional options and deliver complete solutions that save time and labor during installation.



Keep flatware organized and easy to access with a knife drawer insert and cutlery tray.



Keep electronics charged while freeing up counter space with a built-in charging drawer.



This feel-good solution has dedicated bins for trash, recycling and composting for quick and easy clean-up.



Deep roll-out trays offer more storage for bulky items.



Maximize drawer space with a tiered cutlery divider.

Modifications

Put Medallion innovation to work for you

Hundreds of modifications are available to turn common cabinets into custom solutions that allow installation to go faster and finished designs to fit right the first time.

Modifications in as little as one-quarter-inch increments

Reduce the use of fillers and other components by modifying the height, width or depth of cabinets down to one-quarter-inch increments.

These made-to-order options are produced to your specification and ship complete for easier and faster installation.



Limited modifications available in Deluxe.

Custom Quote services for truly unique design needs

For a truly custom design, Custom Quote services are available in Premium. Please consult your Menards Team Member if these special services are needed.



MEDALLION™

CABINETRY

HANDCRAFTED FOR YOU.

A Menards Team Member will help you further in your selections.

Ask for a no-obligation design, floor plan and

3D rendering to help create your project.



MedallionAtMenards.com

**BUILT IN THE
USA**

At the forefront of American craftsmanship and tradition, Medallion believes the best in quality, design, and production starts at home—providing jobs and supporting US communities for nearly 50 years.

PRODUCT AVAILABILITY

Styles and product availability may vary slightly from those shown in this catalog due to material availability and/or improvements to our designs. Specifications are subject to change without notice. Check with your sales associate for product specifications before planning your kitchen.

PRINTING LIMITATIONS

Product photography and illustrations have been reproduced as accurately as print and web technologies permit. To ensure highest satisfaction, we suggest you view an actual sample for best color, wood grain and finish representation.

An **acpi**.brand

© 2020 Medallion Cabinetry
LIT-MENPLNGUIDE 02 2020 100K

MENARDS